

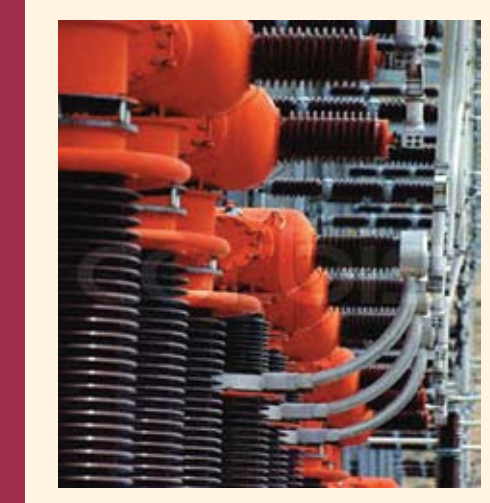
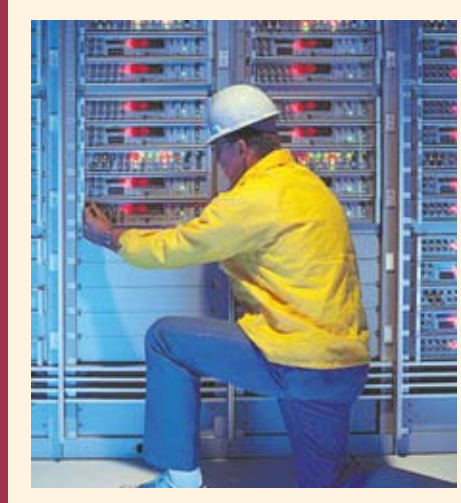
WORLDWIDE OFFICE LOCATIONS

Atlanta
Chicago
Columbus
Dallas
Denver
Detroit
Houston
Los Angeles
London

Minneapolis
New England
New York
Philadelphia
Raleigh
San Jose
Tampa
Toronto

To contact one of our offices in the U.S. and Canada, please call + 1 800. 326.5075

To contact one of our offices in the UK, please call + 44 118. 949.7164



EQUIPMENT LOSS CONSULTING / FORENSIC ENGINEERING / RESTORATION / DATA SERVICES



Certainty in an Uncertain World

POST-DISASTER TECHNICAL SOLUTIONS



Certainty in an Uncertain World

www.lwgconsulting.com

EQUIPMENT DAMAGE EVALUATION

LWG provides the best route to recovering from damage to equipment of all types.

We deploy time-tested techniques including inspections, tests, technical interviews and detailed analyses to identify the cause of damage.

Our experts assemble thorough inventories, employ advanced testing techniques to assess the extent of damage and determine the costs/benefits of available repair, restoration and replacement options. We recommend the best course of action in a way that minimizes the adverse impact that a loss can have on a business, property owner, or insurer.

Our highly trained consultants are adept in managing the mitigation process on large and complex losses, ensuring timely, efficient recovery. Our experience includes project management and catastrophe response at the World Trade Center, the Oklahoma City Bombing Site, and a continued host of natural disasters such as hurricanes, earthquakes, and floods.



EQUIPMENT RESTORATION

LWG reduces recovery costs and business interruption with equipment restoration solutions.

With the largest full-time staff of trained technical restoration technician, LWG provides the immediate response needed to stabilize damaged equipment and restore it to pre-loss condition. Our engineering-based processes and advanced decontamination methods minimize downtime and headaches by restoring full reliability in a timely fashion.



Contact LWG at:
+1(800) 326-5075 or www.lwgconsulting.com

DATA RECOVERY & ANALYSIS

LWG recovers a business' most important asset: information.

Businesses need information and technology to survive. Lost or corrupted computer data can cause a business to fail through loss of critical information, clients, and revenue. LWG's in-house clean room and data recovery lab have helped countless clients recover lost, hidden or moved data. This data may be valuable evidence or may be critical in restoring a business to pre-loss conditions following a loss event.

FORENSIC ANALYSIS ORIGIN & CAUSE

LWG answers questions about the cause of failures, accidents and fires.

When injury or catastrophic property damage occur, LWG's engineers, scientists, and investigators perform the forensic analysis needed to determine the cause, and when applicable, identify the responsible party. We employ a systematic approach based on steps that may include inspections, electrical/mechanical testing, modeling and other analytical techniques depending on the circumstances of the incident. Our team of experts can assist with many different types of incidents, including fires and product liability.



EXPERT TESTIMONY

LWG resolves disputes by finding and demonstrating the facts.

Our consultants are recognized as expert witnesses in many jurisdictions in matters that involve damage to equipment or catastrophic accidents. Our professional, qualified experts are adept at presenting highly complex technical matters to non-technical audiences in a courtroom.

LOSSES & PERILS

Breakdown / Mechanical Failure
Data Loss or Corruption
Electrical Contact / Electrocution
Fire, Smoke & Explosion
Lightning / Power Surge
Natural Disasters
Product Defect / Liability
Shipping / Handling
Theft / Vandalism
Water / Chemical Contamination

INDUSTRY SPECIALTIES

Aerospace
Agribusiness Equipment
Broadcast & Entertainment
Food Processing
HVAC & Environmental
Industrial / Manufacturing
Information Technology
Medical & Scientific
Power Generation / Distribution
Printing / Publishing
Semiconductor / Electronics
Telecommunications